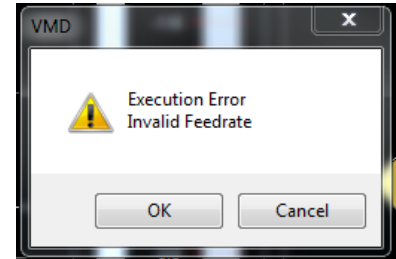


Invalid Feed Rate Error on Growth Series Machine

Error:

Invalid Feed Rate



Verification:

- After encountering a feed hold condition during a job an attempt to run the job again is made and the error is presented.
- After attempting to toggle Tool 1 on from the Tool Library

Cause:

The previously installed file had a traverse setting configured which led to the error constantly populating.

Solution:

1. Close all instances of the VMD software
2. Power off the Accumove 2 Controller
3. Download the ConstDefs.zip folder from [here](#).
4. Extract the downloaded folder.
5. Copy the file ConstDefs.amci
6. Navigate to C:\Program Files (x86)\Lincoln Electric\Torchmate Controller Data\Scripts
7. Delete the existing file titled ConstDefs.amci
8. Paste the downloaded ConstDefs.amci file into this directory