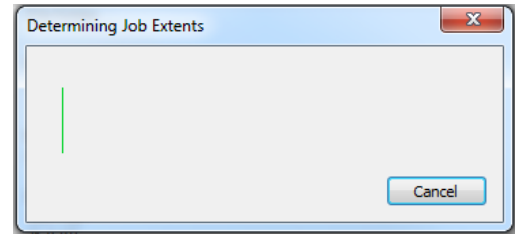


Error:

Determining Job Extents



Verification:

When opening a Job in the VMD software a window appears stating the error mentioned above.

Cause(s):

1. The use of special characters changes the VMD's ability to translate the file. Additional periods cause the VMD software to see the file as a different file extension. See Solution #1
2. The VMD software is attempting to load multiple Jobs at once. See Solution #2
3. The Accumove controller is no longer connected to the VMD software. This error may indicate that the VMD software is attempting to process the part to the controller, but it no longer is communicating. See Solution #3

Solution(s):

1. Remove all special characters from the file name (. , - / ' " #)
2. Uncheck any or all files in the while browsing for the desired g-code file.
3. If solutions 1-3 do not resolve the issue, close out of the VMD software, power the Accumove controller off for 1 minute, and reboot the controller and VMD software.