

# TECHNICAL BULLETIN — Torchmate Cad-Cam: Installation Guide

This guide will show how to install Torchmate Cad-Cam on any of your Windows based devices.

Please download the version of Cad that works with your Licensed Dongle. **Note:** Cad 8 license will work with 9 as well.

If you purchased an EDU license. Your students can install the Student version for free and it will not require a Dongle.

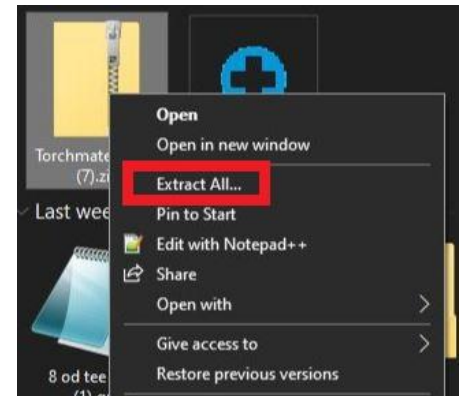
However the Student version cannot output to our tables, only the Master version can convert .EDU Files.

Please click [Here](#) for the link to Cad-Cam Downloads Page.

Please Click [Here](#) for basic training videos.

## Step 1:

Once you have downloaded the Cad-Cam installation from the link above. You will need to unpack the Zipped file by either copying or extracting the folder within. To extract right click the file and click **Extract All**, then select where to extract to.

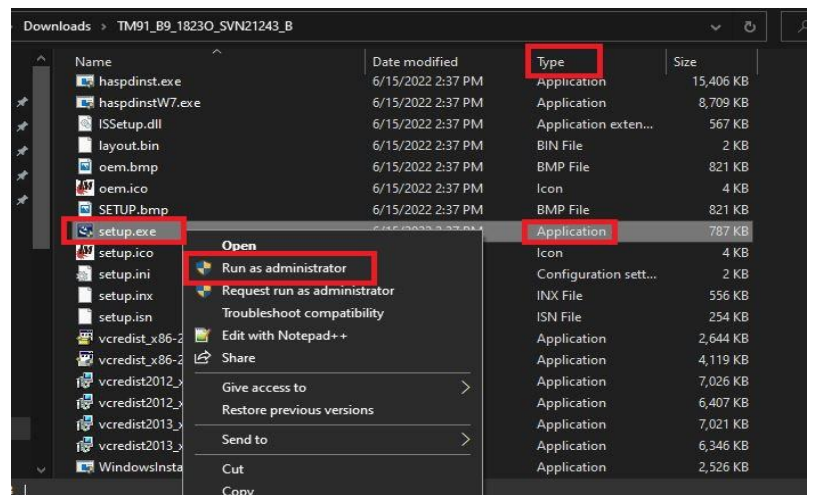


## Step 2:

Open the folder you extracted out of the Downloaded Zipped file. If it was Cad 9 the file name will start with (TM91\_B9). Within this folder look for the file called (**setup.exe**). It may just be called (**Setup**). If you do not see the .exe extension, then select the one that says (Application) under the "Type" Column.

## Step 3:

Right click on the **Setup.exe** file and click **Run as Administrator**.



Updated on: 06/23/22

Page 1 of 5

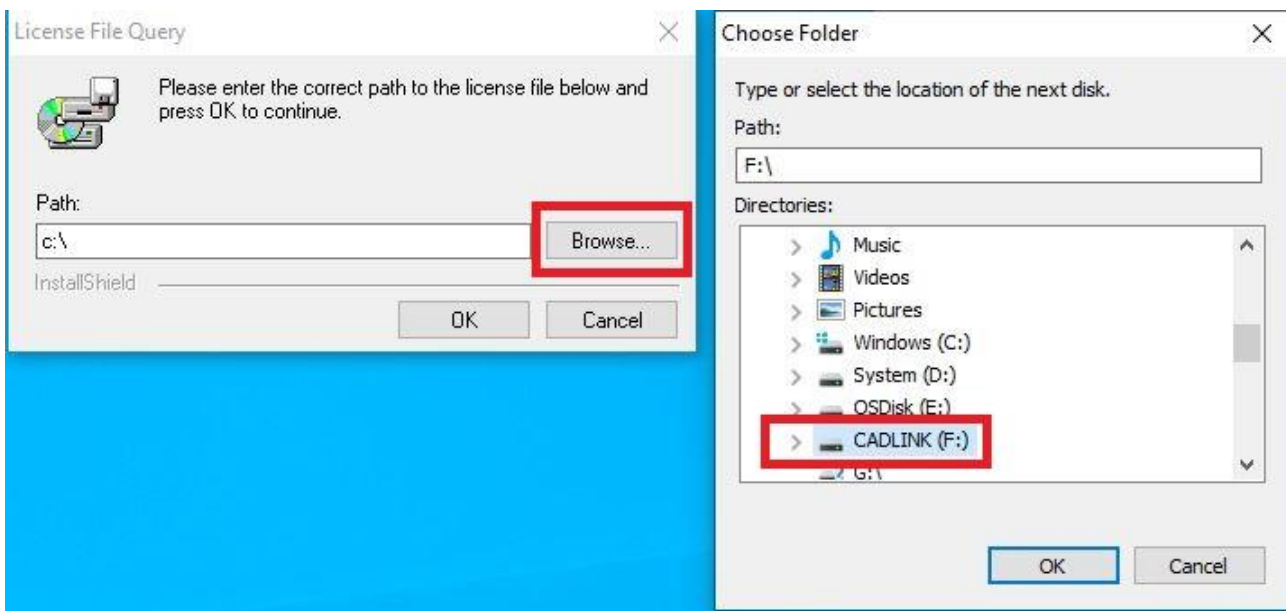
**Step 4:**

Please make sure your Cad-Cam dongle has been inserted. Once completing Step 3 you will see the following prompt. Our newest Dongles are mini Stainless steel USB, and does not show up in this picture. Please click **Next** to proceed.



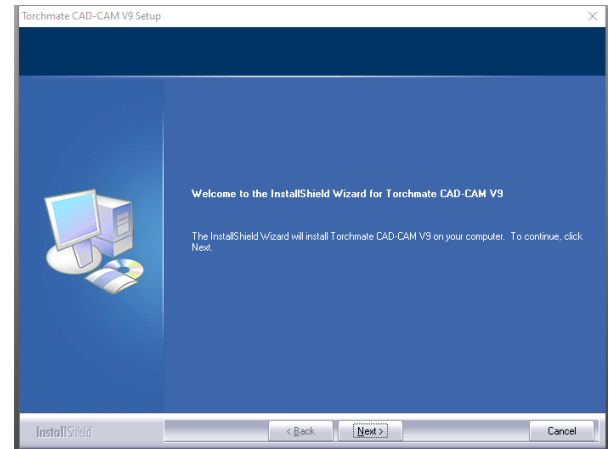
**Step 5:**

After Clicking Next on step 4, the software will either auto detect your dongle, or ask where the **license file** is located. If it found it. Skip to step 6, if asked for the **License File Query**. Click on **Browse**, then select your dongle letter within the Directory listed. If having issues finding the dongle, try searching within (**This PC**) drop down. The dongle can be called **CADLINK** or **USB Disk**. Then click **OK**, then **Ok** again on the **License File Query**.

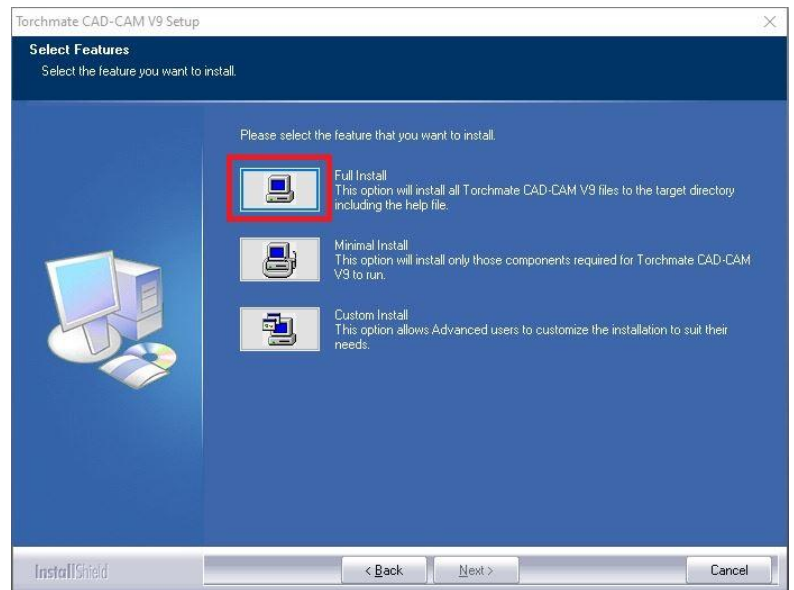


**Step 6:**

When the License files have been found the Installation will show the following. Proceed by clicking **Next**, and accepting the terms on the next page then **Next** again, and again.

**Step 7:**

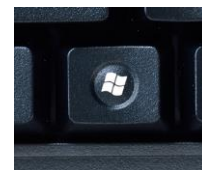
Once you get to the **(Select Feature)** page. Click on the **Full Install**, unless you want a **custom install**. Then click next through the next couple of pages until the software starts to install.

**Step 8:**

Lastly you will be prompted to install your fonts. You can skip and install later through the menu on Cad-Cam or select **Continue** to install now. If you Select **Continue**, it may ask what drives to search fonts within. Select the **C drive** and click **OK** unless you have fonts stored in another drive. Wait for the font installer to search the entire selected drive for fonts (This may take a few minutes).

**Step 9:**

Once you have the software installed. We will need to make sure a power-saving feature within windows does not turn off the Dongle while using the program. **To do this first make sure your dongle is still plugged in.** Then on the Keyboard, Press the **Windows Key** to Launch the **START MENU**.



Updated on: 06/23/22

TORCHMATE TECHNICAL SUPPORT: 866-571-1066

www.torchmate.com

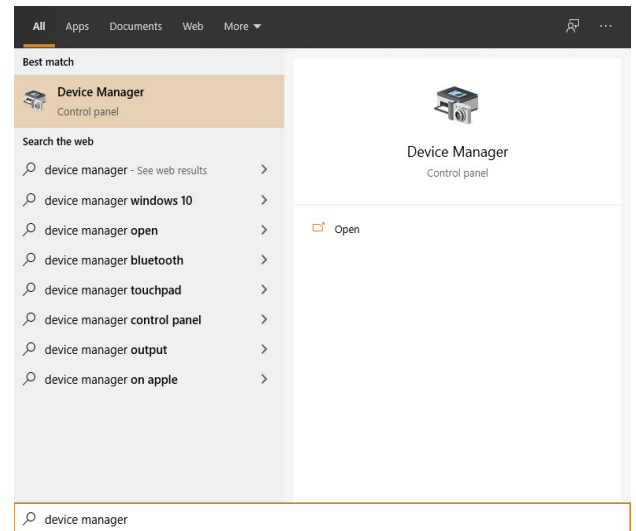
© Lincoln Global Inc. All Rights Reserved.

Page 3 of 5



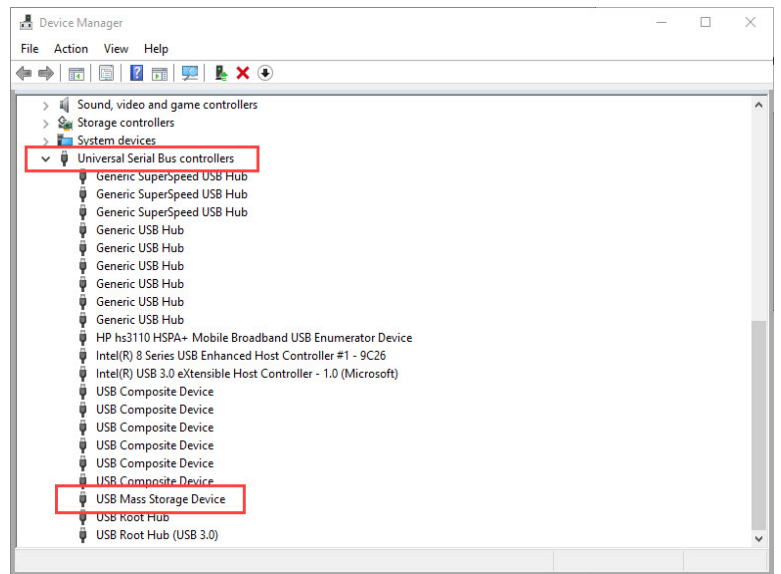
**Cutting  
Systems**

**Step 10:** Once the START MENU opens, Type 'Device Manager'.  
With the **Device Manager** selected, press ENTER and this  
Will launch the **Device Manager**.

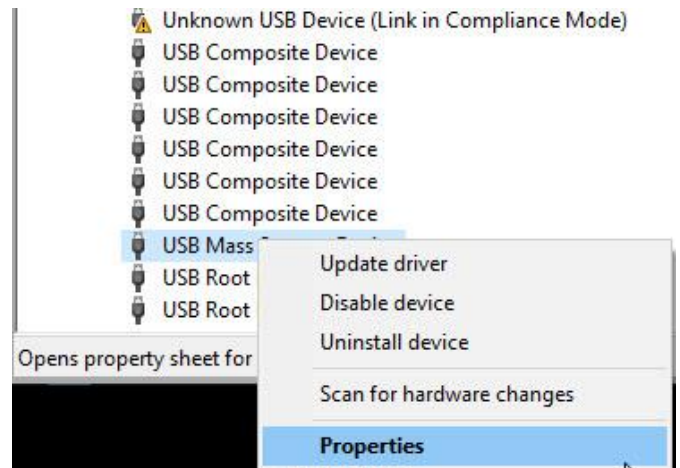


**Step 10:** When the Device Manager screen opens, scroll down  
and locate **Universal Serial Bus Controllers**.

Press on the Arrow to expand the list of items.  
Locate **USB Mass Storage Device**



**Step 10:** Select the **USB Mass Storage Device**, and **Right-Click**  
Select **Properties**



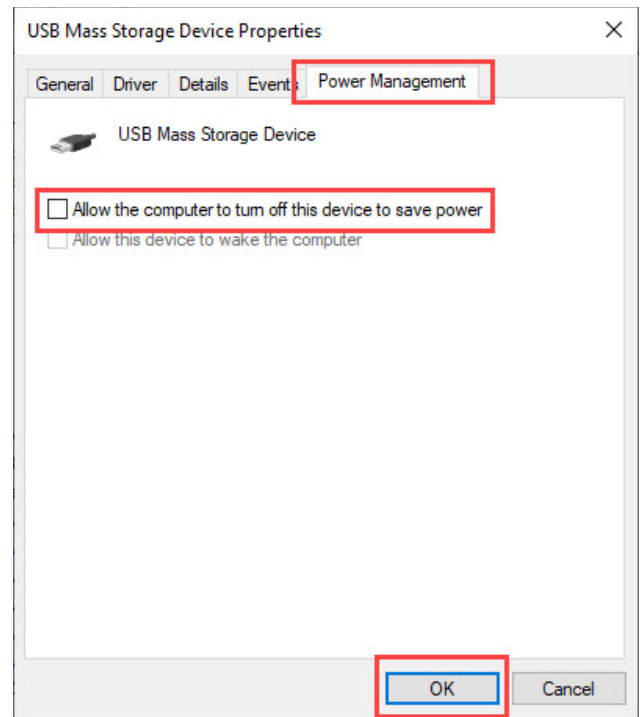
**Step 11:**

In the TAB Selection, Select **Power Management**.  
Uncheck – **Allow the Computer to turn off this device to save power.**

Press **OK**

Then press the **X** on the **Device Manager** Window  
This will disable the power settings to turn off the **USB**  
while being used by the **TM CAD-CAM Software**.

If you continue to have issues with the dongle of  
**TM CAD-CAM** software, contact Technical Support.



This concludes the installation Guide for TM Cad-Cam. You can launch the program from the new shortcut on your desktop. **NOTE:** Please keep in mind to always have your dongle inserted during use of the program. Make sure either the computer is turned off, or you have ejected the Dongle every time you need to unplug it. Otherwise the license can get corrupted on the Dongle.

Updated on: 06/23/22

TORCHMATE TECHNICAL SUPPORT: 866-571-1066  
www.torchmate.com

© Lincoln Global Inc. All Rights Reserved.

**LINCOLN**  
**ELECTRIC**

**Cutting  
Systems**

Page 5 of 5