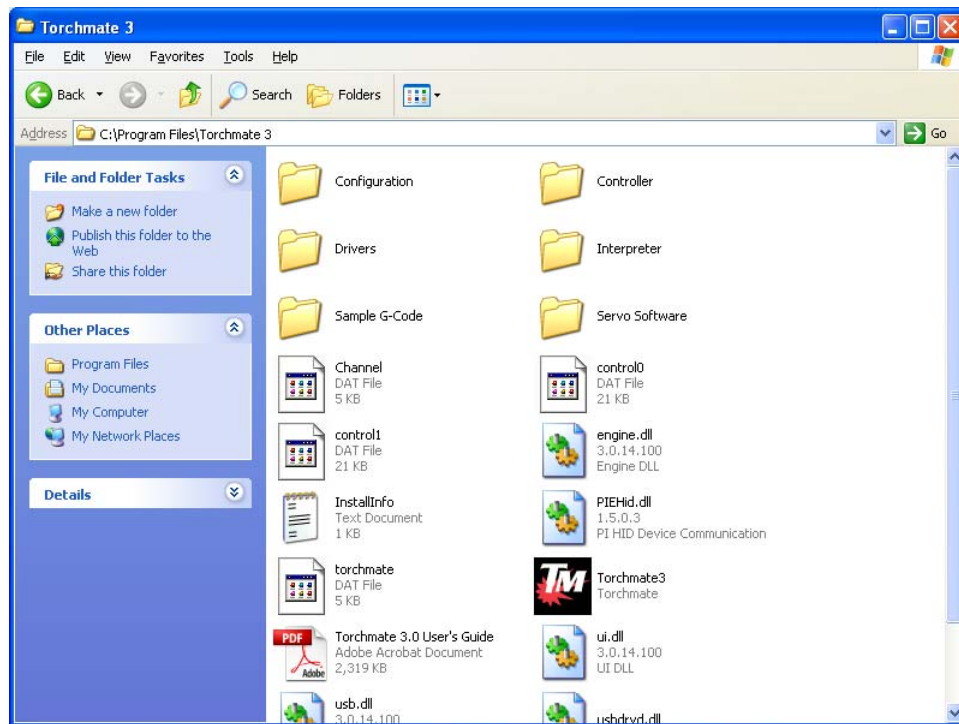


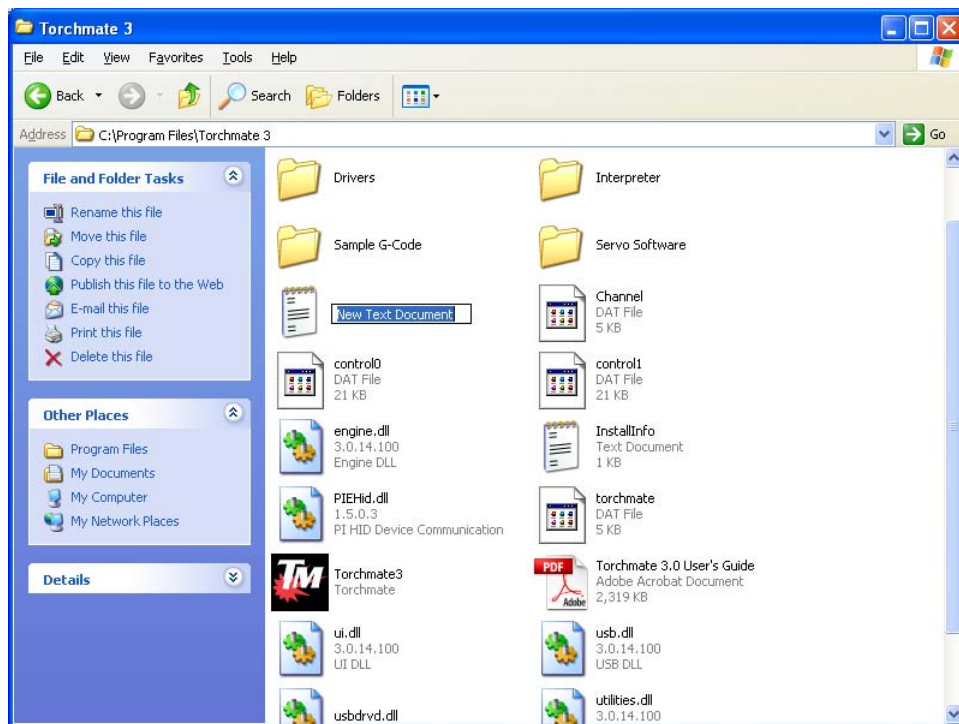
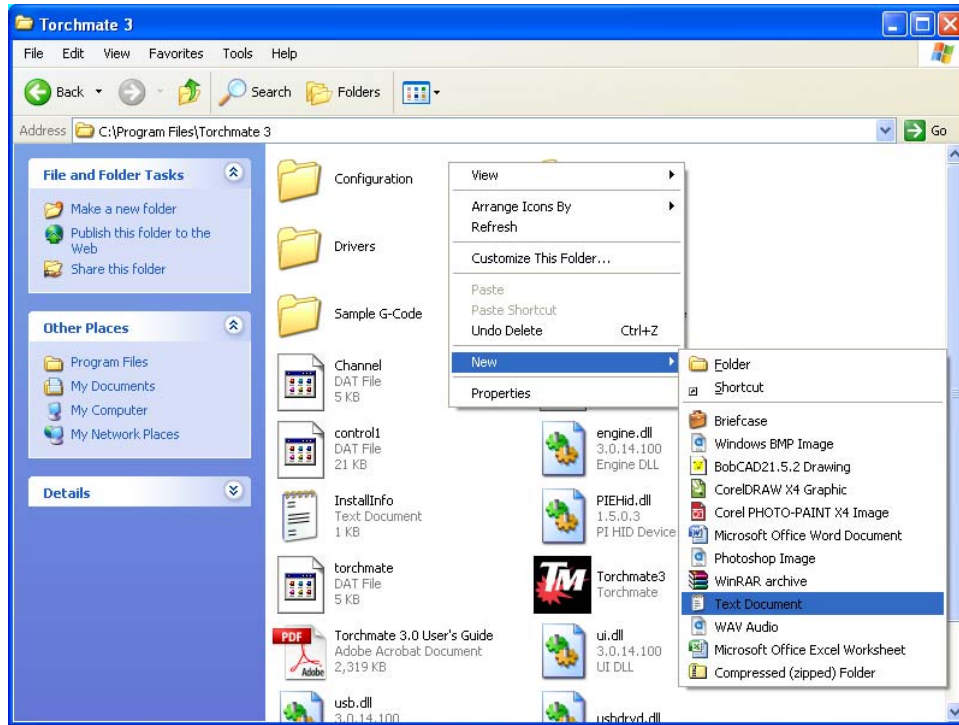
Using Express Mode:

Express mode can be used when cutting at very slow speeds to allow for better motor step signals to be sent. Express mode is enabled by creating an empty text document that is named 'expressmode' in the Torchmate driver software folder.

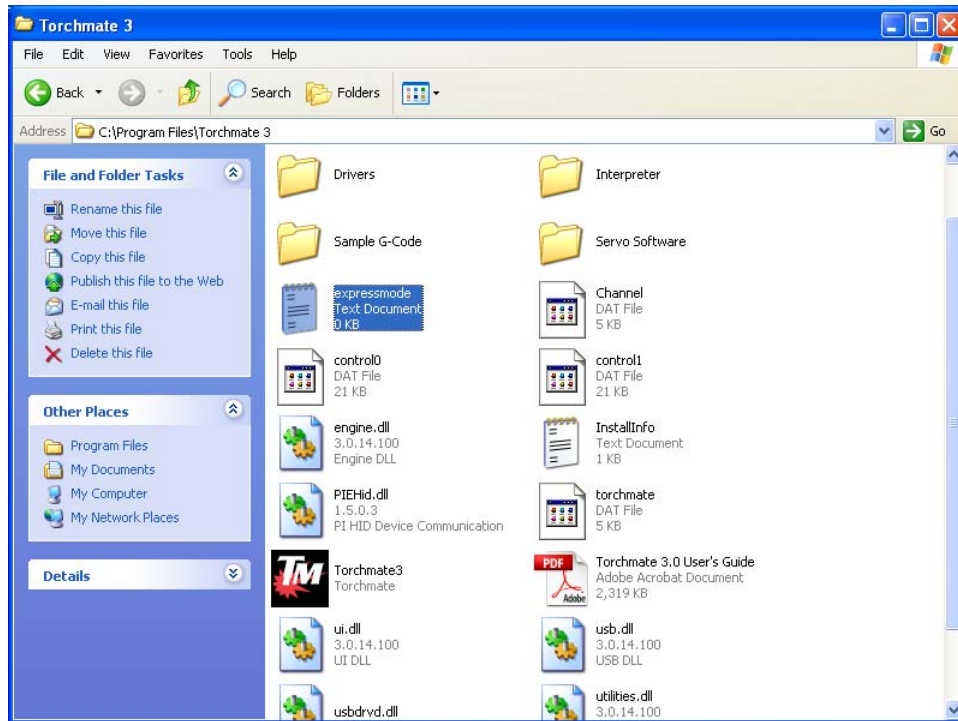
Begin by locating the following folder C:\Program Files\Torchmate 3



Once in this folder right click on an empty spot to create a new text document.



This new text document needs to be named 'expressmode'



When the Torchmate driver software is now opened it will be in express mode. To disable express mode simply change to name of the text document to anything other than 'expressmode' and restart the program. To re-enable express mode change the name back.

