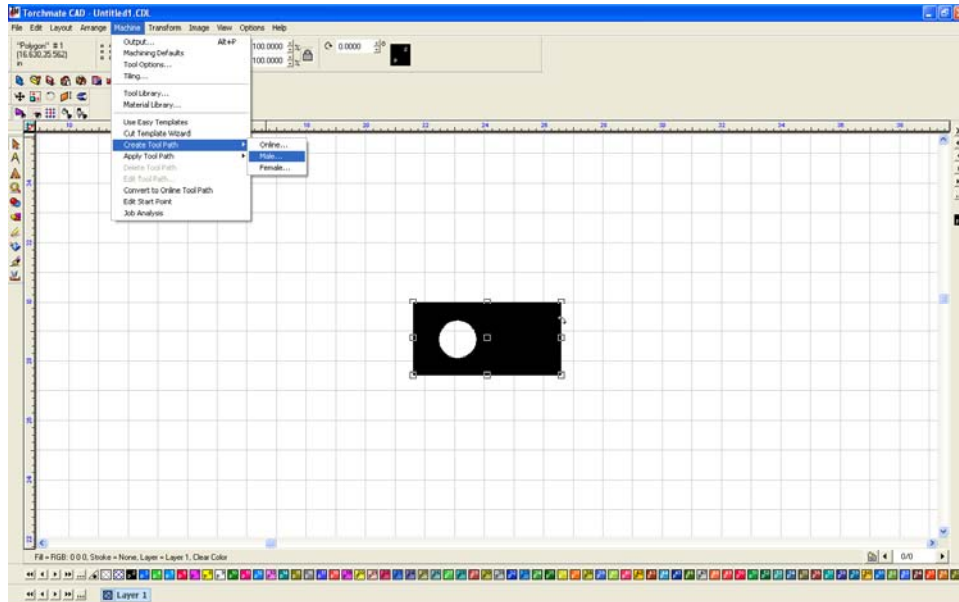
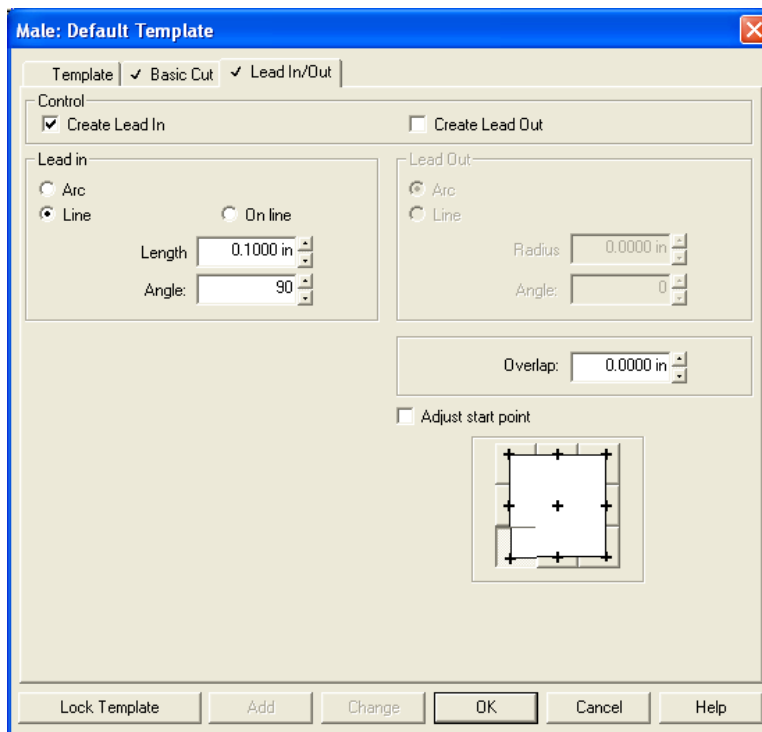


Creating Tool Paths:

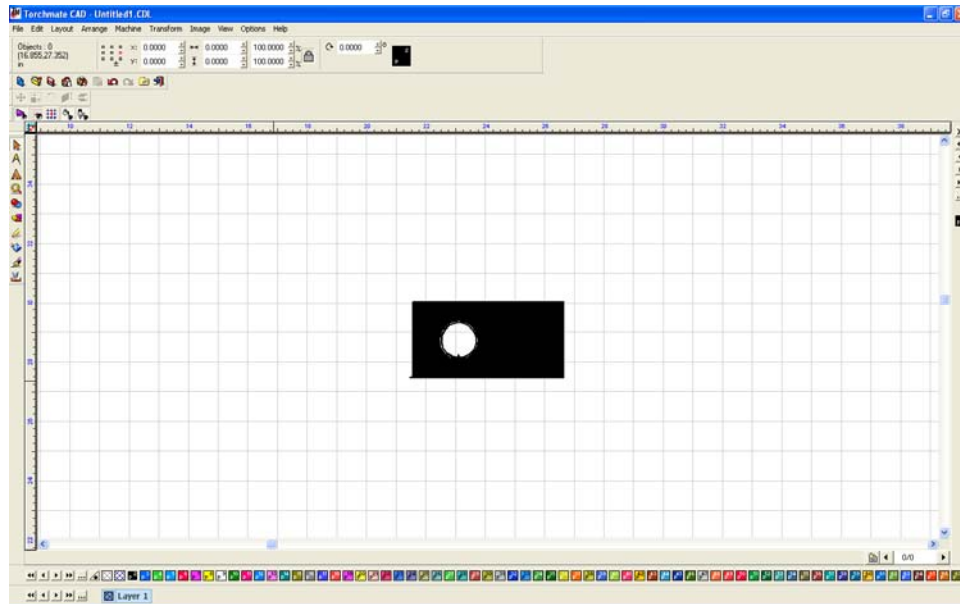
To create a tool path go to 'Machine' → 'Create Tool Path' → 'Male'.



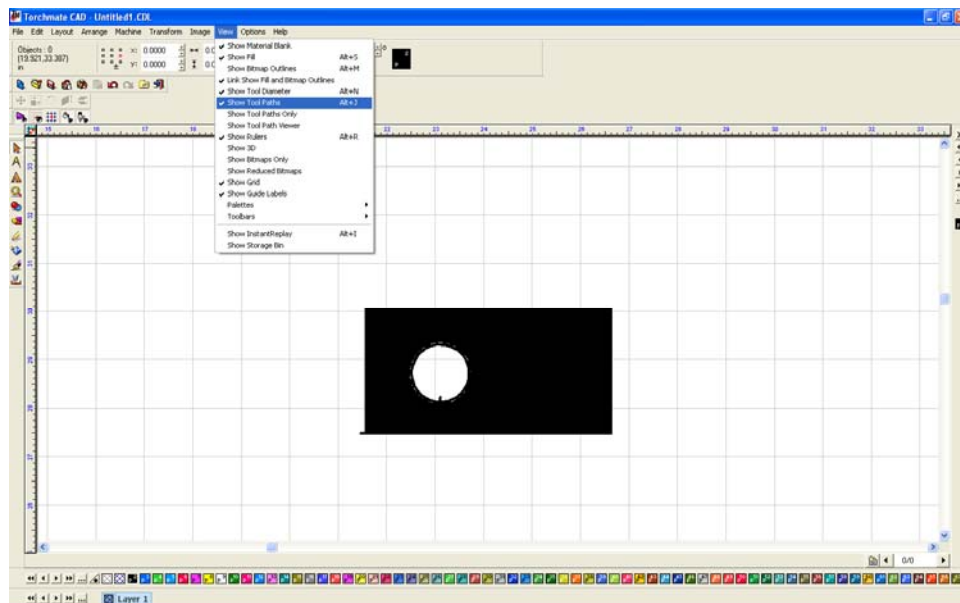
For this simple part the only changes to be made are under the 'Lead In/Out' tab. Create a lead in by specifying a length and angle. Then press 'OK' to create the tool path.



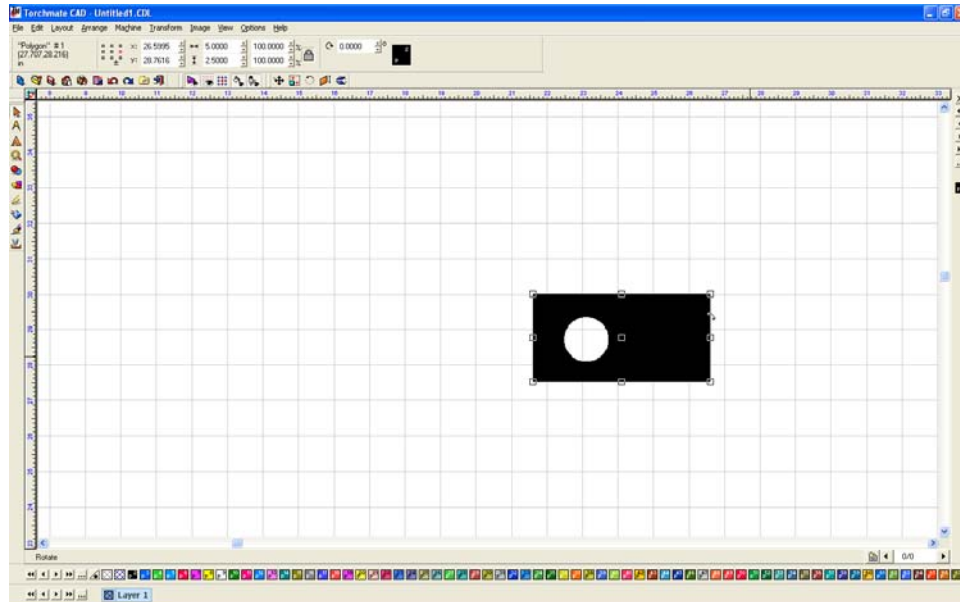
The screen now has two objects on it, the original part drawing and the tool path. The original drawing is no longer needed and needs to be removed.



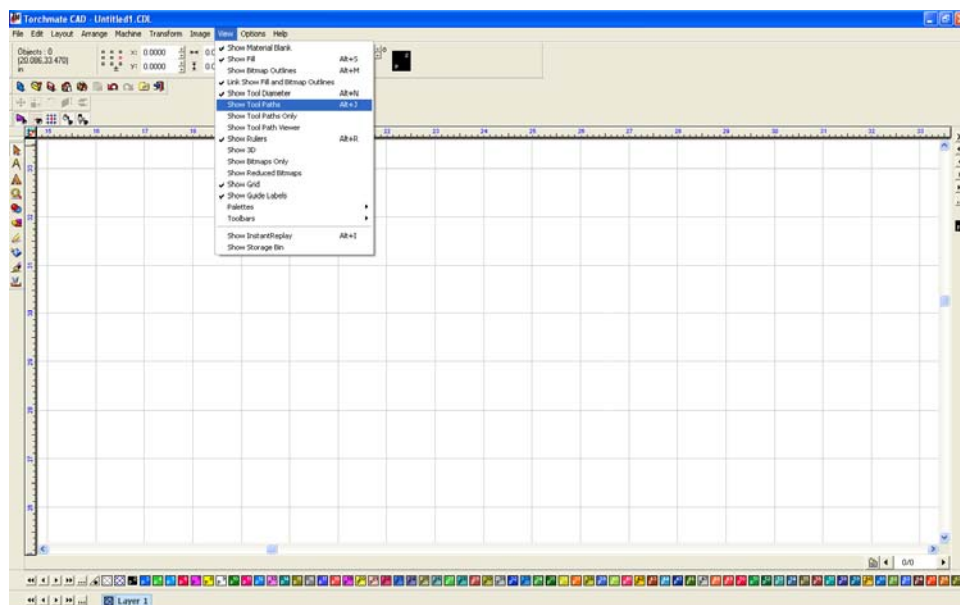
To eliminate the original drawing go to 'View' → 'Show Tool Paths' and ensure that it is unchecked.



The only object visible now is the original object.



Select the object and press 'Delete' the screen will be blank now. Go back to 'View' → 'Show Tool Paths'.



The only remaining object is the tool path, this part is now ready to export to be cut.

