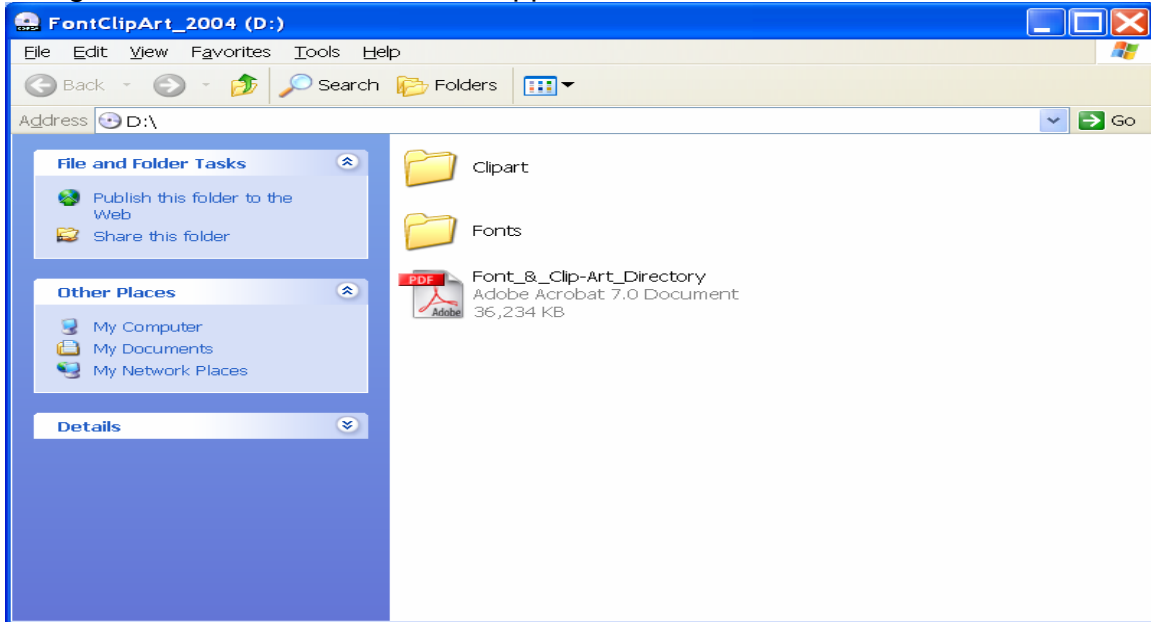
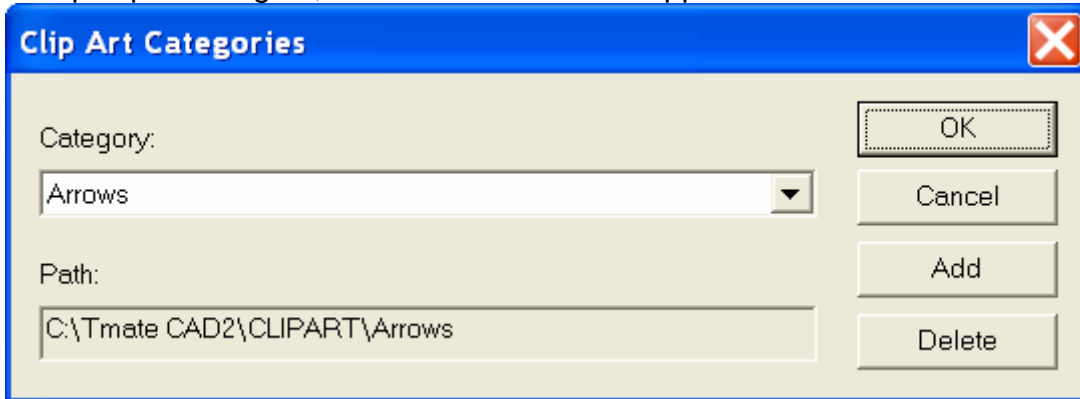


This walk-through will help you to install the Clipart files from your Cadlink CD-rom to the Torchmate Cad.

Place the Clipart CD into the tray of your CD-rom reader. Once the Cd has been recognized, the window below will appear.



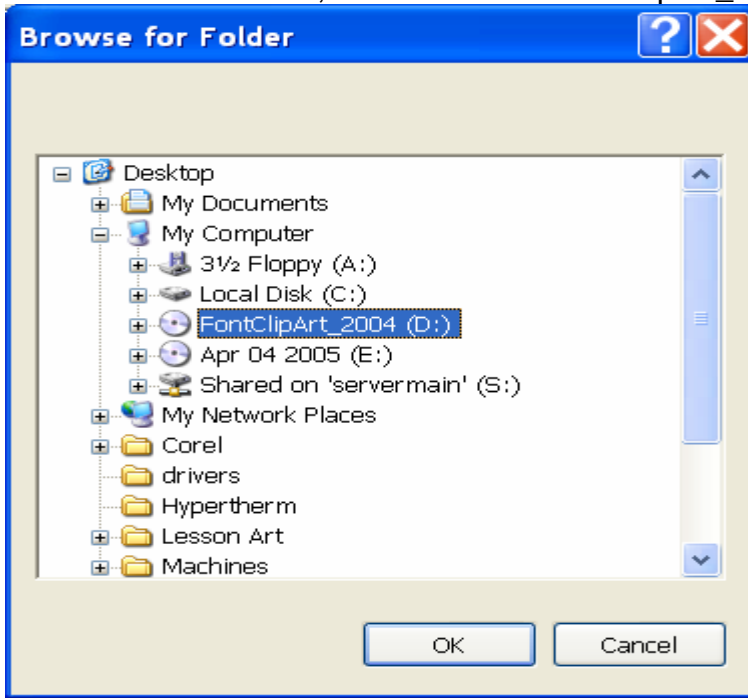
Minimize this window, and open the Torchmate Cad. Go to the Layout menu, and scroll down towards the bottom of the drop-down menu to Clipart Categories Setup. Upon doing so, the window below will appear. Click on the Add button.



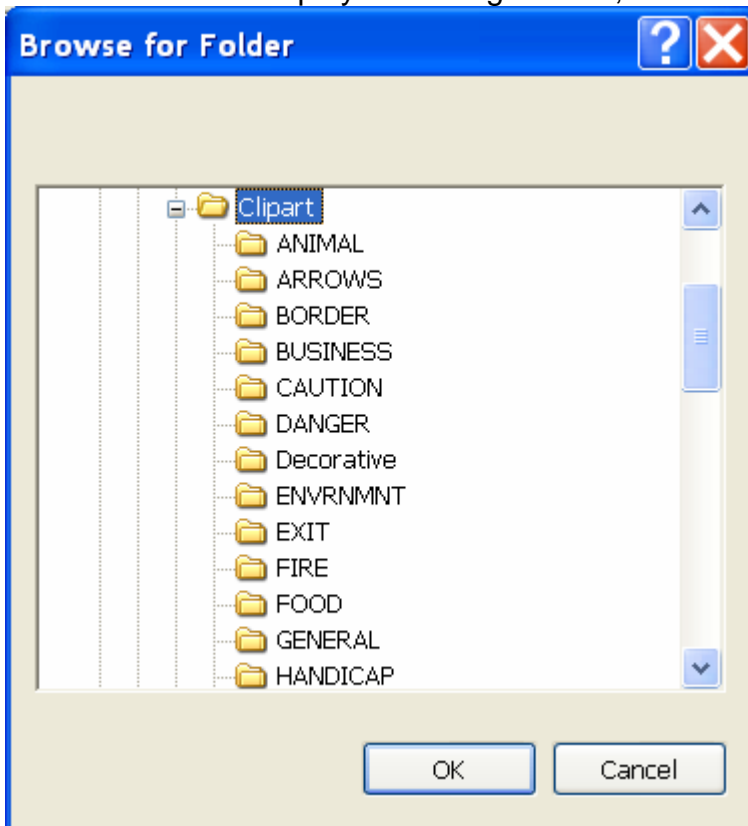
Enter cdrom in the Name section, and then press the Browse button.



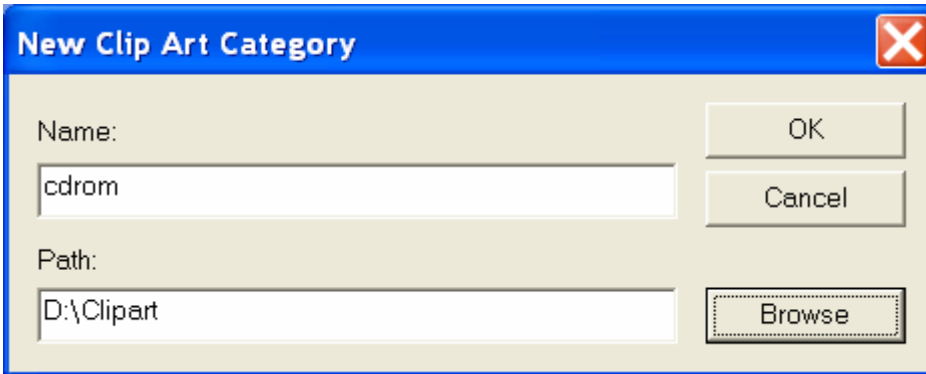
In the Browse window, double click on FontClipArt_2004 (D:).



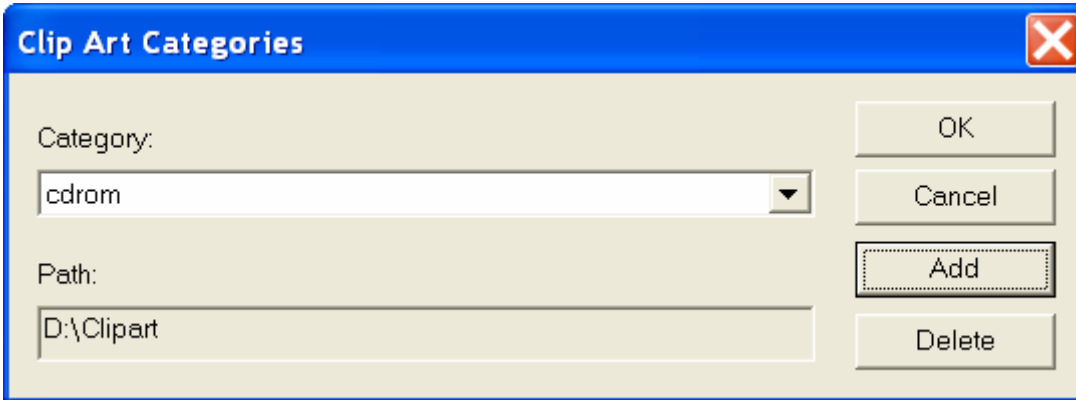
When the screen displays the image below, click the OK button.



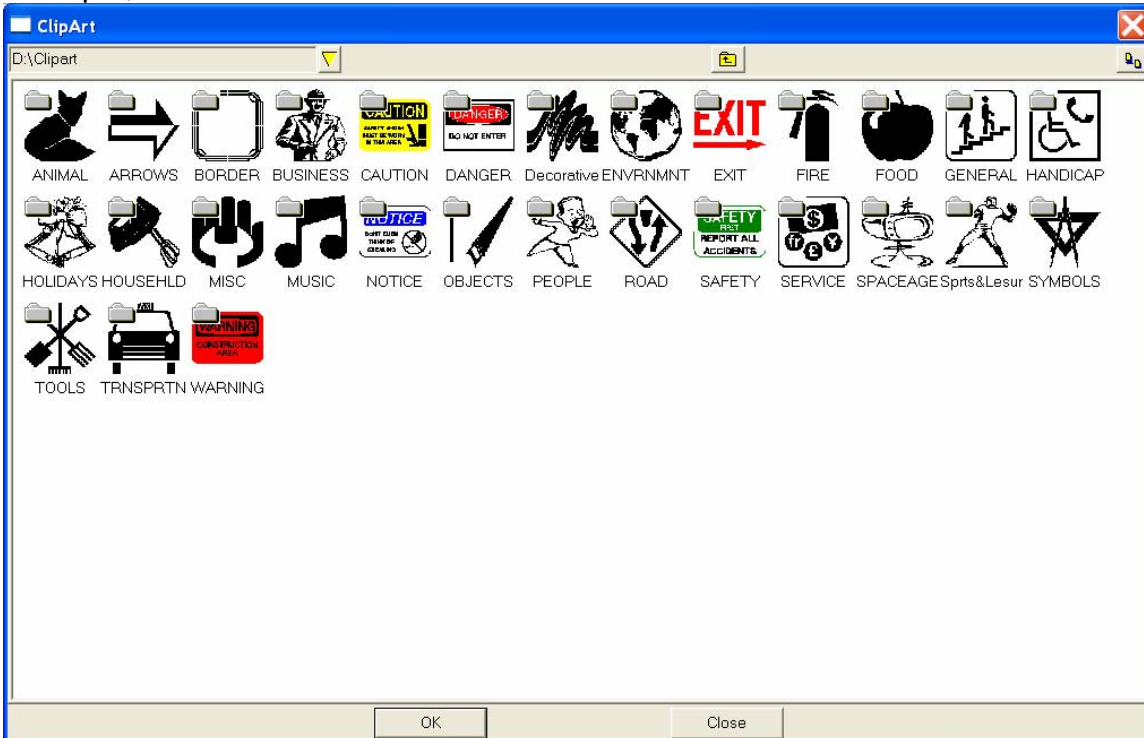
Click OK on this window.



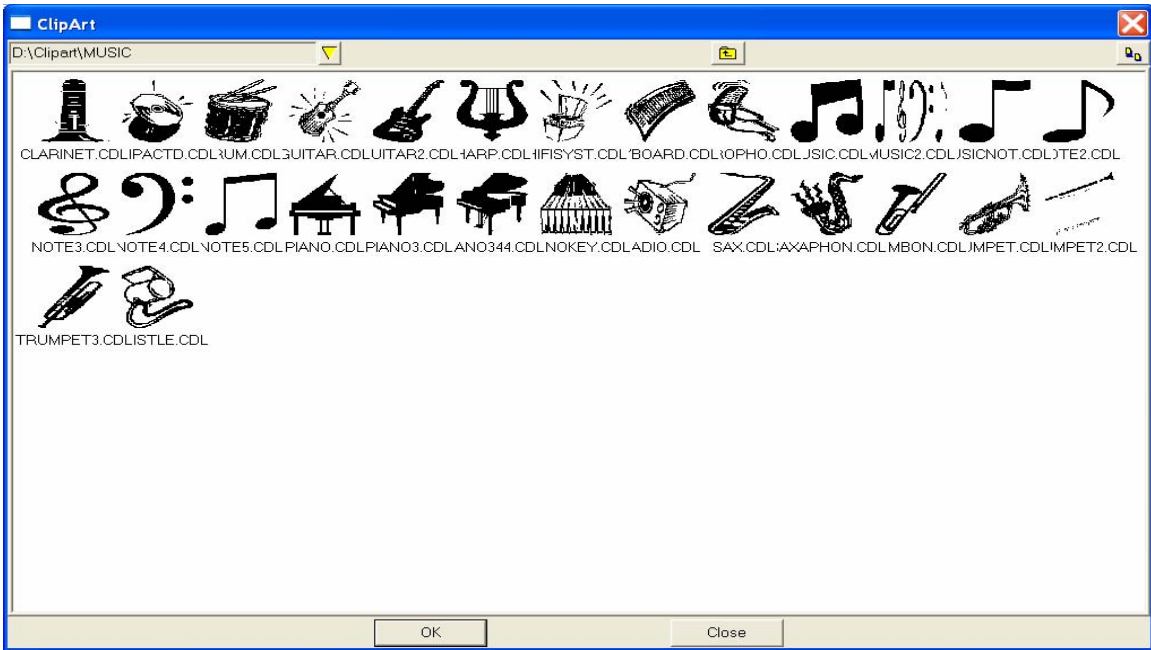
Click OK on this window.



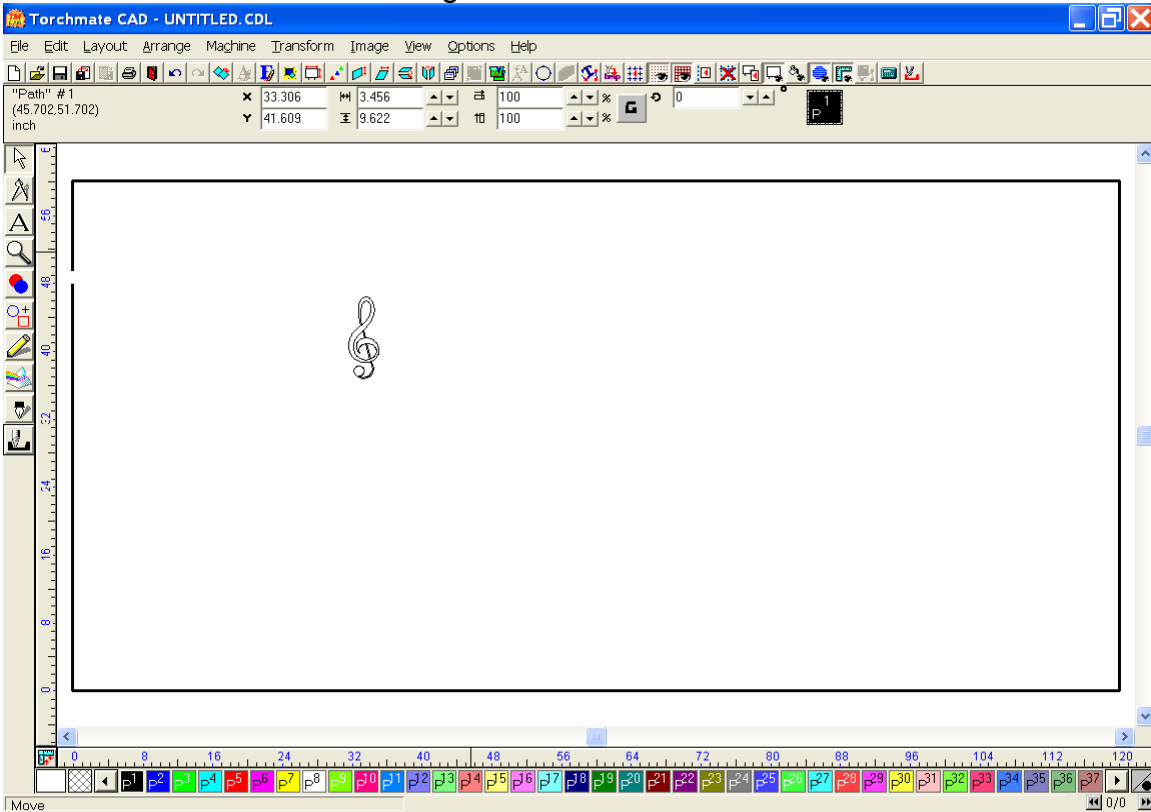
Re-open the Torchmate Cad, go to the Layout menu, and select "ClipArt Go To", and then click on "cdrom". Upon doing so this window should appear. For this example, click on the folder titles Music.



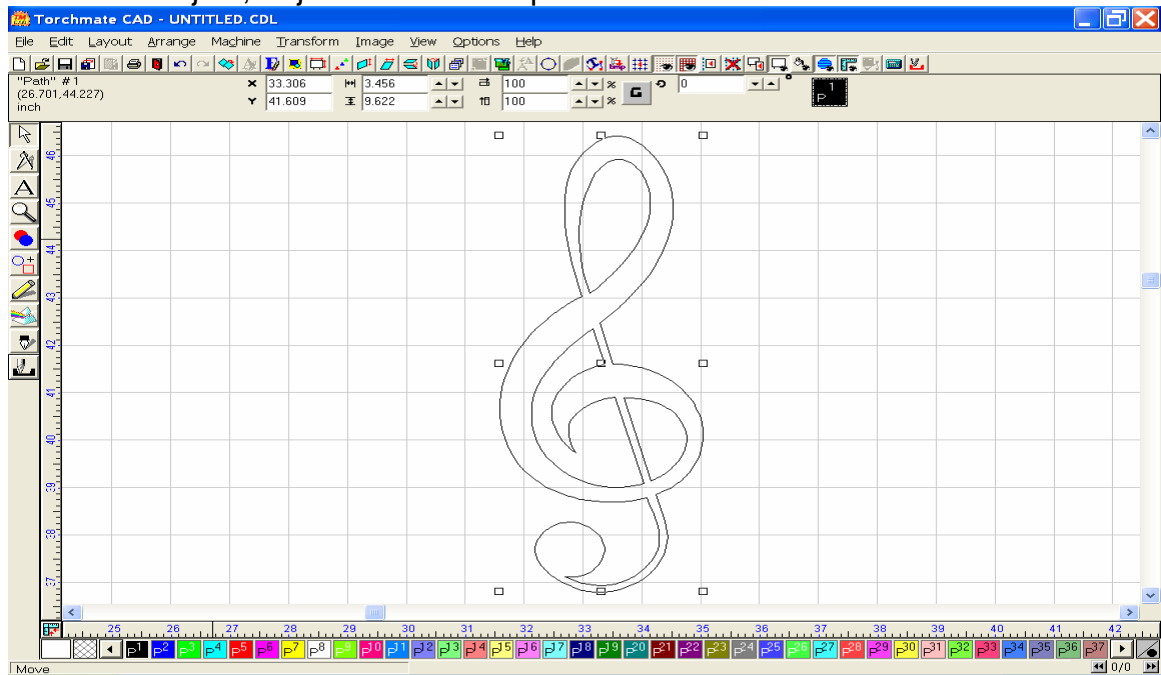
This window shows the contents of the Music Folder. Double click to select the Note 3.CDL file.



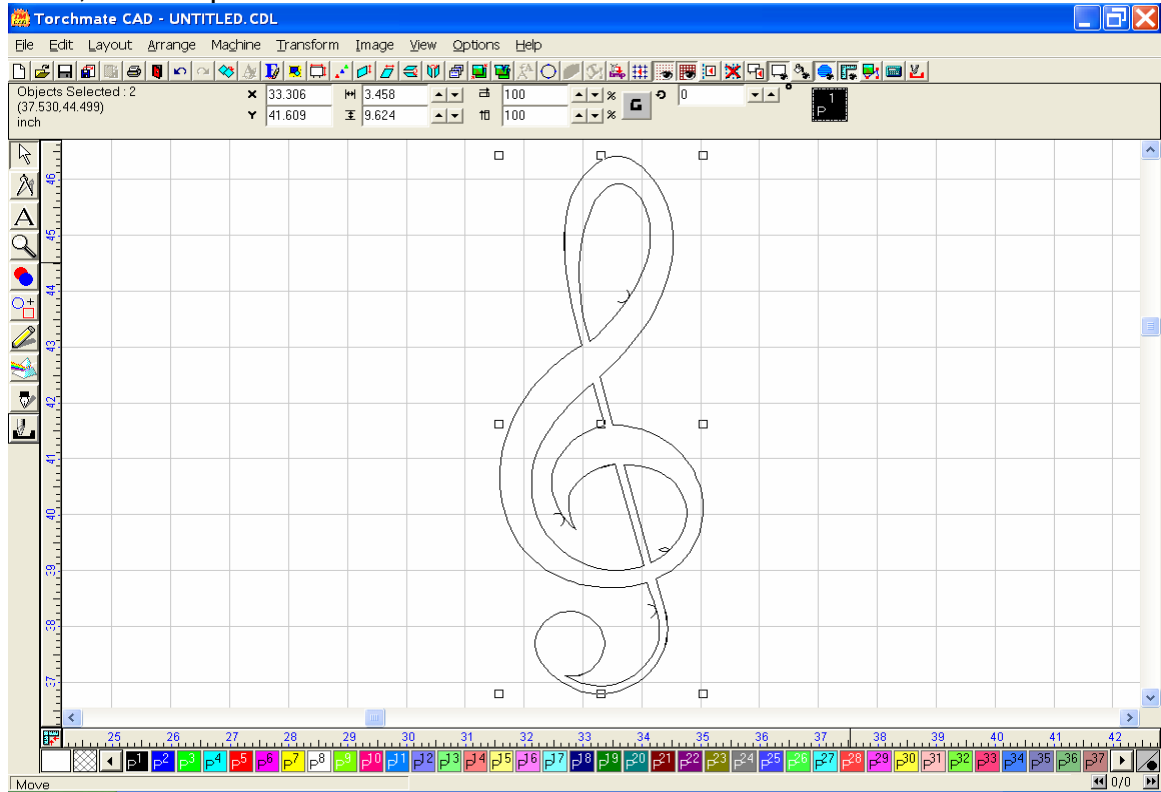
The cursor will change in to an upside down "L", and then move your cursor to a location on your Torchmate Cad material sheet, and press the left mouse key one time. This will load the image to the material screen.



By Zooming in on the image you can see the detail more closely. You may now resize the object, or just make a tool path on it.



Here, the tool path has been created.



After Importing the file to the Driver Software, and zeroing out all of the coordinates, we are ready to push start.

Torchmate - TREBLE.FGC - TMATE161.STP

File Setup Controller View Coordinates Help

Y

5

0

0 5 X

Program Set 0 Machine Clear 0

X 0.0000 X N/A

Y 0.0000 Y N/A

Relative Set 0 Dist To Go

X 0.0000 X 0.0000

Y 0.0000 Y 0.0000

Machine tool idle Offline

G-Cd Jog Point Home Aux

Curr. Tool: No Tool Specified

Faster Program Feedrate: 0.0

Slower 100 % Override: 0.0

Reset Step Continuous

Start Feed Hold (Any Key)

(File created using Torchmate DXF Import)
 (Import File: TREBLE.DXF)
 (Import Date: 10/5/2005)

N10 G00 X 2.7263 Y 2.5714
 N20 G01 X 2.7515 Y 2.5566 F70.00
 N30 G01 X 2.7795 Y 2.5479
 N40 G01 X 2.8086 Y 2.5459
 N50 G01 X 2.8375 Y 2.5506

As you can see the program is cutting the center of the image first before cutting the exterior path.

Torchmate - TREBLE.FGC - TMATE161.STP

File Setup Controller View Coordinates Help

Y

5

0

0 5 X

Program Set 0 Machine Clear 0

X 1.3979 X N/A

Y 6.2424 Y N/A

Relative Set 0 Dist To Go

X 1.3979 X 0.0838

Y 6.2424 Y 0.3430

Move interrupted Offline

G-Cd Jog Point Home Aux

Curr. Tool: No Tool Specified

Faster Program Feedrate: 70.0

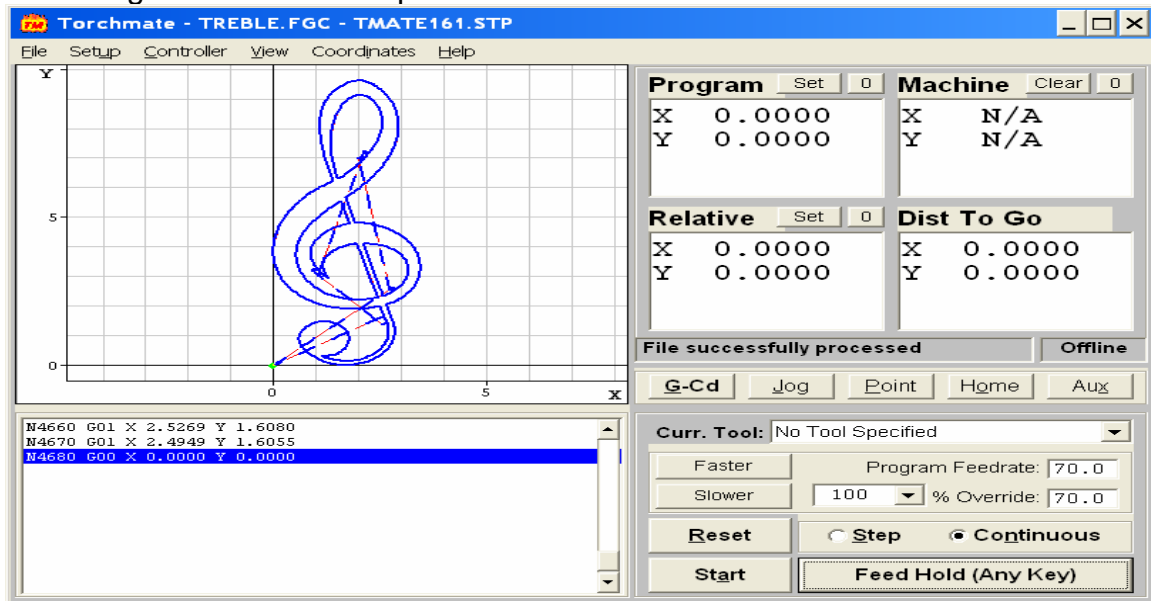
Slower 100 % Override: 70.0

Reset Step Continuous

Start Feed Hold (Any Key)

N2630 G01 X 1.3980 Y 6.2407
 N2640 G01 X 1.3138 Y 6.5856
 N2650 G01 X 1.2331 Y 6.9314
 N2660 G01 X 1.1936 Y 7.1409
 N2670 G01 X 1.1589 Y 7.3513
 N2680 G01 X 1.1291 Y 7.5624
 N2690 G01 X 1.1081 Y 7.8115
 N2700 G01 X 1.1012 Y 8.0034
 N2710 G01 X 1.0991 Y 8.1955

This image show the entire pattern cut.



I hope this has shown you the proper way to install the ClipArt from the CD and how to use these shapes to create your own image files. Please note that some of the ClipArt images are better suited for plasma cutting, while others are more suitable for routing. Looking carefully at the images in the ClipArt folders will give you a better idea of which will work best for your operation.