



WWW.TORCHMATE.COM

280 SOUTH ROCK BOULEVARD, SUITE 150
RENO NV 89502

TOLL FREE (866) 571-1066
INTERNATIONAL 1 (775) 673-2200
SALES@TORCHMATE.COM



PLASMA, OXY-FUEL,
AND MORE

MACHINE DEMOS
AVAILABLE IN
YOUR AREA

NEW 6 AXIS ROBOT
WELDS OUR TORCHMATE X
WATER TABLES



ABOUT US

We are very proud of our achievements over the past 25 years. Becoming a leader in a competitive industry by offering a low cost shape cutting machine with the same industrial durability as those more costly machines out there. From a small shop to a distribution center, Torchmate CNC Cutting Systems was built from the ground up.

President Bill Kunz began Torchmate with one idea in mind...to offer a metal cutting machine that even a beginning entrepreneur could afford. He offered the first Torchmate pantograph machine in U-weld-it form for \$400. This machine appeared in an automotive magazine for its affordable, yet sturdy build. Today we appear on SPIKE TV's Powerblock and the like for the same reasons. We offer sturdy, precision machines that you can afford.

Why Should You Choose Torchmate CNC Systems?

- We have been manufacturing cutting machines for over 25 years
- Free unlimited Tech Support
- One year warranty
- Powerful, flexible, easy to use software
- Precision ground rail components
- Most accessories on the market
- Complete manufacturing systems
- Do it yourself kits or simple bolt together options
- We offer solutions from small home machines to large capacity industrial machines
- All machines are built to handle full time industrial use
- Adaptable to a wide variety of applications including plasma, oxy-fuel, waterjet, laser, routing, engraving, drilling, and much more!



2009 FEATURED MACHINES



TORCHMATE 1

Our most economical option
Do It Yourself Kit (you build the table and gantry)
Sized from 4'x4' to 6'x40'
Suitable for light to industrial applications



TORCHMATE 2



"Since owning the Torchmate we have almost doubled our turnover..."



Dual drive system
Available as Gantry Kit or as Bolt Together
Sized from 4'x4' to 6'x40'
Suitable for crane or hand-loaded thin plate

2009 FEATURED MACHINES

"We are using the machine 6 days a week 12 hours each day. It has cut thousands of pieces with no trouble."



Easy forklift access feature
Available as Gantry Kit or Bolt Together
Sized from 4'x8' to 10'x40'
Suitable for large volume production and heavy materials



Welded with our 6 axis robot
Available as Turn Key System
Sized from 5'x10' to 10'x40'
Handles 2" + thick plate
Designed to handle the most demanding, heavy-duty industrial applications

MACHINE SPECIFICATIONS



TORCHMATE 1

Torchmate One Specifications:

Cutting capacity	4' x 4' to 6' x 40"
Construction	User provided steel
Power (X axis)	Single 264 oz. in. motor
Power (Y axis)	Single 264 oz. in. motor
Electronics	2 amp. half-stepping
Machine Resolution	Approximately .0015"
Speed range	Approximately 3 – 300 IPM
Units of measure	Inch or metric
Y axis	User fabricated
X axis	Hardened needle bearing cam followers
Drive	Rack and pinion on both axes
Legs	User fabricated
Weight	Approx. 350 lbs. (4'x8' capacity)
Footprint	80" x 132" (4' x 8' capacity)

"I'm not only a customer of Torchmate, but find myself still calling some of the staff to see how they are. They are now part of my extended family and I look forward to doing business with them in the future."

MACHINE SPECIFICATIONS



Torchmate Two Specifications:

Cutting capacity	4' x 4' to 6' x 20'
Construction	Reinforced extruded aluminum
Power (X axis)	Single 264 oz. in. motor
Power (Y axis)	Single 264 oz. in. motor
Electronics	2 amp. half-stepping
Machine Resolution	Approximately .0015"
Speed range	Approximately 3 – 300 IPM
Units of measure	Inch or metric
Y axis	Industrial linear motion components
X axis	Hardened needle bearing cam followers riding on ground steel rails
Drive	Rack and pinion on both axes
Legs	Industrial leveling screws (4'x8' and larger)
Weight	Approx. 350 lbs. (4'x8' capacity)
Rail Height	36"
Footprint	80" x 132" (4' x 8' capacity)

"The staff at Torchmate has been exceptional..."

MACHINE SPECIFICATIONS

TORCHMATE 3



Torchmate Three Specifications:

Cutting capacity	4' x 4' to 10' x 40'
Construction	Reinforced extruded aluminum
Power (X axis)	Two 264 oz. in. motor
Power (Y axis)	Single 264 oz. in. motor
Electronics	2 amp. half-stepping
Machine Resolution	Approximately .0015"
Speed range	Approximately 3 – 300 IPM
Units of measure	Inch or metric
Y axis	Industrial linear motion components
X axis	Hardened needle bearing cam followers riding on ground steel rails
Drive	Rack and pinion on both axes
Legs	Leveling feet or anchor mount
Weight	Approx. 450 lbs. (4'x8' capacity)
Rail Height	41" and 33"
Footprint	80" x 132" (4' x 8' capacity)

"Torchmate plasma CNC machine helps us a lot in our day to day production."

MACHINE SPECIFICATIONS



TORCHMATE X

Torchmate X Specifications:

Cutting capacity	5' x 10' to 10' x 40'
Construction	Built with our 6 axis Kuka robot for consistency
Machine Resolution	Approximately .0015"
Y axis	Precision Y axis linear guide—the ultimate in accuracy and durability
X axis	.001 tolerances, 63 Micro finish, custom made in the USA
Weight	Approx. 4800 lbs. (5' x 10' capacity)
Motors	Closed loop servo drive motors for maximum speed a precision
Feature	Adjustable water height Low backlash 10:1 gearboxes Handles 2" + thick plate Durable powder coat finish Easy access doors for cleaning Angled support slats for increased life

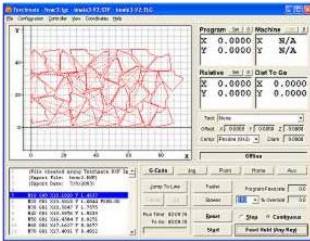
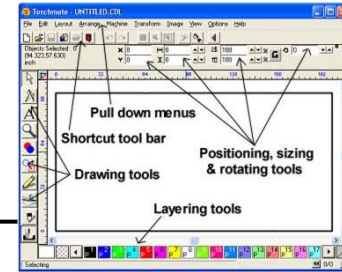
"This machine does a better cut than any other plasma cutter I've seen."

Software

Torchmate Driver Module

Generates, edits, and runs G code
Feed rate override with speedometer
Metric and inch measurements
Keyboard control of torch on and off
On-screen torch path simulation
Back up and start at any line of G code

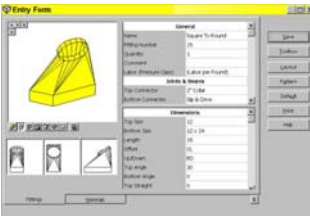
Real or accelerated time simulation
Program controlled dwell for plasma
Program controlled dwell for oxy-fuel
Digital readout of torch position
Plate processing time estimator
Ability to work in 3D
Automatic dwell after pausing



Torchmate CAD

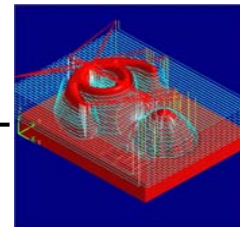
Full automatic nesting
Automatic kerf compensation
Metric and inch measurements
Auto lead-ins and outs
Scanned images
Many file import format options

Text editing capability
Torch travel direction control
Creates duplicates in patterns
Full CAD drawing capability
On-screen context sensitive help
Works in different layers
Customize program features to fit your needs



Design2Fab Sheet Metal Sheet Metal and Plate Layout and Estimating Software for HVAC, Industrial, Piping, Roofing, and more

Rhino and RhinoCAM Rhino features uninhibited free-form 3D modeling. The RhinoCAM plug-in includes 2-1/2 axis, 3 axis, hole making operations, hundreds of post-processors and a post-processor generator, and much more



BobCAD-CAM Basic 2D machining operations as well as model design and mold making. BobCAD-CAM provides you the toolpath and g-code to cut your parts with ease.

"We've had the machine since June 2005 and it is an amazing machine, very accurate and fast."

Options and Accessories



Air Pollution Control System collects dust and smoke for CNC Plasma Cutters
Features: 7.5 HP side mount fan rated for 2,500 CFM at 10" w.c., Four(4) HemiPleat® HE fire-retardant cartridges with 325 sq.ft. of media each, Easy to remove dust drawers, Easy open access door to cartridges, Tool-less cam-lock cartridge removal, View port in sound enclosure to check fan rotation, and Sprinkler kit



Laser Crosshairs locates the torch position without having to cycle the Z-axis down
Features: Ability to view toolpath when test cycling a program without cutting, large radius of device allowing for mounting at the top of the torch away from the cutting area, Software driven connected to signal generator box, Laser can turn on and off at specific points in the program automatically, Manual option, and Adjustable lens heads



Plate Marking Attachment requires no plate height setting
Features: Pneumatic motion travels until pen contacts plate, Adjustable downward force to prevent impact damage, Adjustable engraving thickness and depth, Adjustable pen throttle (BPM) affects line thickness and impacts per second for dotted line or smooth line effect, Dual 120 volt solenoids for activation of pen and actuator (includes independent activation option)
Air: Connector 1/4"OD quick connect tubing, Pressure 90 PSI clean dry air, Regulator 30 PSI for pneumatic actuator (recommended setting 15-20 psi)
Pen: BPM 1-13500, Working Pressure 90 PSI (6.2 BAR), dBA (with no plate contact) 82+/-2 dBA, dBA (with plate contact) 100-120 dBA, In line lubrication is recommended ensuring to ONLY lubricate plate marker itself

Options and Accessories



Thermal Dynamics and Hypertherm **Plasma Cutters** are competitively priced and fully compatible



Tube Cutting Attachment enables detailed cuts on tubing curvatures



Arc Voltage Torch Height Control makes automatic adjustments to correct torch tip to work distance



Automated Z Axis upgrade includes additional Z axis circuitry, a physical third axis and BobCAD-CAM 3D software for routing applications



Computer Cabinets and Workstations provide secure storage in harsh environments protecting your valuable computer equipment



Visit our **Consumables** Webstore for all your system consumable needs

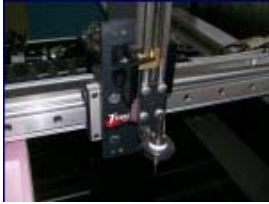


Harris / Victor 3 Hose Oxy-Acetylene Cutting Outfits : machine torch, 2 tips, 2 oxygen regulators, and 1 acetylene regulator



Solenoid Valve is a 115 volt a/c activated solenoid valve required for oxy-fuel cutting. This controls the on/off function of the oxygen

Options and Accessories



Probe Sensor is available for use on our Torchmate 2, Torchmate 3, and Torchmate X systems giving your machine full prototyping capability. Put any sample shape or piece on your table, set the distance between passes and probe offset and walk away. Your system will recreate just about any part of the code to cut as many duplicates of it as you need. This is a great option when simple CAD drawings just are not possible. It is especially helpful when trying to recreate a complicated 3D shape. Forget learning how to draw the part, just let your Torchmate Cutting System recreate it for you.



Cable Carrier Kits Our cable carrier kits securely and safely route all cables. Constructed of tough, weather and grit resistant polymers, they combine great flexibility when curved in one direction, and rigidity against being curved in the other. The links can be separated at any point in the chain, making exact sizing easy. Cable carrier with separate channels are available to help you isolate your plasma torch cable from your electronics cables. Necessary brackets and fasteners are included.



Spare Parts Kits Many of our customers rely on their machine to such a degree that down time often costs more than the machine itself. With these customers in mind, we came up with Spare Parts packages which contain some of the items that can wear down over time on a Torchmate System. Most of these parts are inexpensive items, but they are not something you can simply run out to the store and purchase. Some people want a backup for every component on the machine in case they have a power surge from a lightning strike or some other act of nature. Other customers know that they will have laborers running the machine that simply do not care what they break. The Torchmate System lends itself to having inexpensive labor running it. Sometimes this can lead to mistakes which will leave you with a \$10,000 machine that needs a \$100 part in order to get back up and running. Don't lose a day of productivity over that part. Parts kits are customized to your needs and may not contain all items pictured here - many opt not to have spare motors. Plan ahead and ask for a Spare Parts Kit with your Torchmate System.

Options and Accessories



38 function, completely programmable **Remote Pendant**



Machine Interface Box allows your computer to control your tool



Dell Computers are available through Torchmate with driver software installed and configured already for you



Machine and Hand Torch Holders are available, although we do recommend machine torches be used on all of our machines



Slat Support Brackets are included on bolt together system and optional on gantry kits. These brackets are custom designed to safely hold material on the machine eliminating the need for a separate support structure



Gear Rack Upgrade is included on the bolt together systems and is optional on the gantry kits (shown on bottom in photo) saving time over using common off the shelf gear rack (shown on top in photo)



Precision Ground Rails, included on bolt together systems and optional on gantry kits, are a must when absolute precision is required



Brushless Servo Upgrade and Reinforced Gantry are available on Torchmate 3 and X series only



USA	ESTONIA	KOREA	SERBIA	ALYESKA PIPELINE SERVICE CO.
ARGENTINA	FINLAND	KUWAIT	SINGAPORE	BROWN-MINNEAPOLIS TANK
AUSTRALIA	GERMA-	MALAYSIA	SLOVENIA	BP AMOCO PETROLEUM
BAHAMAS	NYGREECE	MEXICO	SOUTH AFRICA	CASE
BELGIUM	GUATEMALA	NETHERLANDS	SPAIN	FEMA
BOTSWANA	HAITI	NEW ZEALAND	SULTANATE OF OMAN	KOHLER
BRAZIL	HONDURAS	NIGERIA	TAIWAN	LENNOX
CANADA	HONG KONG	NORWAY	TANZANIA	LOCKHEED MARTIN
CHILE	ICELAND	PAKISTAN	THAILAND	M.I.T.
CHINA	INDIA	PHILIPPINES	TURKEY	OSHKOSH TRUCK
COLOMBIA	IRELAND	POLAND	VENEZUELA	RAYTHEON
CROATIA	ISLE OF MAN	PUERTO RICO	UNITED ARAB EMIRATES	RENSSELAER POLYTECHNIC
CYPRESS	ISRAEL	ROMANIA	ZIMBABWE	TEXAS A&M UNIVERSITY
ECUADOR	ITALY	RUSSIA		UNIVERSITY OF ALASKA
EGYPT	JAPAN	SAUDIA ARABIA		UNIVERSITY OF CA BERKLEY
ENGLAND	KENYA	SCOTLAND		UNIVERSITY OF SOUTHERN CA
				US AIRFORCE, ARMY, & NAVY
				WASHINGTON STATE PATROL

Torchmate Systems Pricing

4'x8' Torchmate 1 Kit with Standard Gear Rack and Dual Drive Kit	\$3,295
4'x8' Torchmate 1 Kit with Upgraded Gear Rack and Dual Drive Kit	\$3,520
5'x10' Torchmate 1 Kit with Standard Gear Rack and Dual Drive Kit	\$3,405
5'x10' Torchmate 1 Kit with Upgraded Gear Rack and Dual Drive Kit	\$3,705

4'x8' Torchmate 2 Gantry Kit with Upgraded Gear Rack	\$7,220
5'x10' Torchmate 2 Gantry Kit with Upgraded Gear Rack	\$7,795
4'x4' Torchmate 2 Small Shop Machine	\$7,495
4'x8' Torchmate 2 Finished Machine	\$8,995
5'x10' Torchmate 2 Finished Machine	\$9,995

4'x8' Torchmate 3 Gantry Kit	\$8,795
5'x10' Torchmate 3 Gantry Kit	\$9,495
4'x8' Torchmate 3 Finished Machine	\$11,995
5'x10' Torchmate 3 Finished Machine	\$12,995

5'x10' Torchmate X Water or Down Draft Machine Starting at \$28,945

Hand Torch Holder	\$235
Machine Torch Holder	\$175
Solenoid Valve (110 Volt)	\$295
Tube Cutting Attachment	\$2,399.95
Slat Support Brackets	\$59
Computer Work Stations	From \$485
Cable Carrier (varies by table size)	From \$325
Harris 3-Hose Oxy-acetylene Cutting Outfit	\$895
Thermal Dynamics Victor Oxy Fuel Package	\$895
Torchmate Machine Interface Oxy-fuel/	\$295
Router	
Torchmate Machine Interface for Plasma	\$295
Remote Pendant	\$395

Design2Fab Foreman Edition Sheetmetal Design	\$2,145
Tochmate CAD Module	\$795
Rhinoceros 3D Software	\$895
RhinoCAM 1.0 Basic	\$1,000
BobCAD-CAM Version 21 Software	\$1,295

Arc Volt Height Control Unit with 25' cable set	\$2,399.95
Torchmate Probe Sensor (Includes Rhinoceros 4.0 & RhinoCAM 1.0 Basic)	\$2,645
Physical Z-Axis Routing for Torchmate 2 (Includes BobCAD-CAM 3D Software Package)	\$1,399.95
Physical Z-Axis Routing for Torchmate 3 (Includes BobCAD-CAM 3D Software Package)	\$1,899.95
Dell Desktop preconfigured with all software purchased with your Torchmate system (Includes Monitor, Keyboard, Mouse, and Surge Protector)	\$800
Dell Latitude Laptop Computer preconfigured with all software purchased with your Torchmate system (Includes Surge Protector)	\$820



775-673-2200 - 866-571-1066 Toll Free - 775-673-2206 fax

www.torchmate.com - sales@torchmate.com

Sales Office: 280 S. Rock Blvd, Suite 150 - Reno, NV 89502

Admin Office: 108 Jordan Taylor Lane, Harwood, MD 20776

"The Torchmate machine is like having your own A.T.M. machine. You put material on it and pull the cash off it. The Torchmate machine has allowed me to work for myself and control my destiny. And for that I thank each and everyone at Torchmate."

No Project is Too Big For a Torchmate

